



Revisions:

This unit is built specifically to fit the Brandt 13 HP, It uses a 14" Tube.

There were no major revisions to the hopper until the 2 Screw Hopper (Twin 9" Screws) was replaced by a 3 Screw Hopper in Mid 2015. At which point the hopper is the same as a 13" 3 screw hopper.

The 14 uses the same collector as a 13 with the dust hose. Spline parts are interchangeable on Dust Host Style 13 & 14

New winch Mount in 2017 for Brandt 13HP

Xtend 14" Installation and Parts Manual

15/08/2018

Table of Contents

Introduction	3
Safety	4
Installation	6
Operation	8
Parts Drawings	9
Maintenance	16
Greasing Locations	17
Winch Modification	18

INTRODUCTION

The Rodono Xtend swing auger is designed to replace the existing swing auger on many different augers manufactured today and in the past. It provides the freedom to drive hopper bottom trailers into place with the intake hopper retracted. The intake hopper may be extended under the trailer under operator control safely and with ease once the trailer is stopped. The Xtend auger is available in 10", 13", 14" and 16" models. The mounting ring is specific to the type of auger that the Xtend is added to. Please be familiar with the operation and safety instructions of your specific auger before adding an Xtend auger to it. This manual is only relevant to the Xtend auger and does not replace or supercede the auger manufacturers instructions.

The specifications for the different models can be found on our website at www.rodono.ca. This equipment can be added to several different manufacturers augers, many of which have had many changes over the years. We try and cover all the possible configurations, but if your installation does not match the documentation please contact us so that we can ensure your equipment will function properly.

SAFETY

Safety is the protection of YOU and the people around you. Do not take risks with your life or others around you. Be certain that everyone operating this equipment is familiar with the recommended operating and maintenance procedures and follows all the safety precautions. Do not risk injury or death by ignoring good safety practices.

Most accidents can be prevented.

The safety symbols and warnings used throughout this manual and on the equipment are specified by the ASABE in specifications related to all farm equipment and specifically portable grain augers. These warnings are meant to make you aware of risks to you. Please understand what they mean and pay attention.



CAUTION

The caution symbol indicates a potentially hazardous situation that, if not avoided, may result in minor or moderate injury. It may also be used to alert against unsafe practices.



WARNING

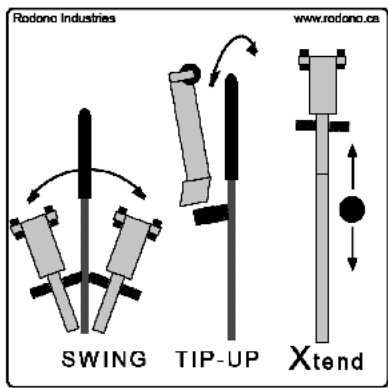
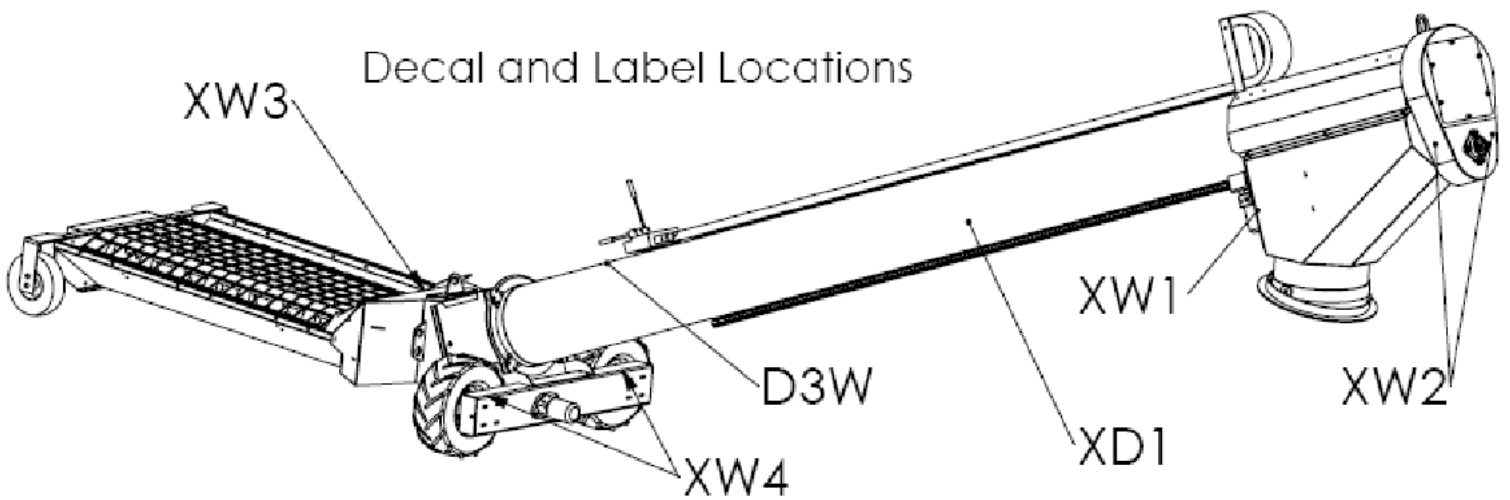
The Warning Symbol indicates a potentially hazardous situation that, if not avoided, could result in death or serious injury, and includes hazards that are exposed when guards are removed. It may also be used to alert against unsafe practices.



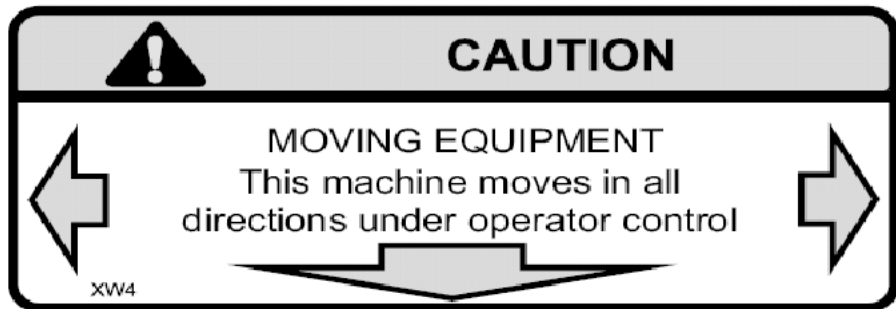
DANGER

The Danger Symbol indicates an imminently hazardous situation that, if not avoided will result in death or serious injury. This signal word is to be limited to the most extreme situations, typically for machine components that, for functional purposes, cannot be guarded.

If for any reason a warning label is damaged, missing or unreadable it is the responsibility of the operator or machine owner to order new ones which must be available from the manufacturer. This applies to the main equipment as well as additions. Please do not hesitate to contact us for new labels.



D3W- Hydraulic Control Decal



XW4- Moving Equipment Warning



XW1- Rotating Part Warning



XW2- Rotating Part Warning



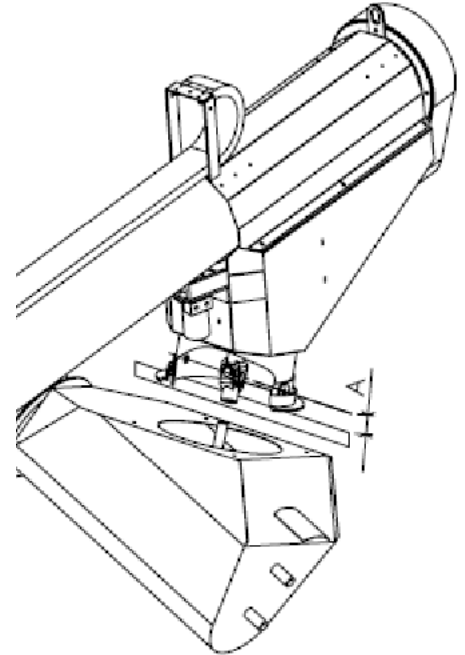
XW3- Rotating Flighting Warning



XD1- Branding Decal

Installation:

- 1: Swing your old swing auger into a position out from the side of your auger that is safe to lift.
- 2: Secure an appropriate lifting device with appropriate lifting straps or chains to your old swing.
- 3: apply slight tension to prevent swing from falling when the fasteners are removed.
- 4: Remove the bolts and washers that hold swivel ring of your old swing unit down to the auger deck. Keep the parts for use on your new Xtend Swing.
- 5: Usually the lower half of the U-Joint that connects the swing auger to main auger is splined and should slip up as the swing auger is lifted. If the spline is seized (usually due to running fertilizer through the auger) then it may have to be pried off, and sometimes heating is necessary. Lift the old swing auger off the main auger deck in a safe manner.
- 6: The center of the U-Joint needs to be aligned with the swivel between the ring and the lower spout of the Xtend swing auger. Check the height from the bottom of the ring you removed to the pivot pin in the ring. This height should match the height on the ring supplied with the Xtend swing. If it does not, please contact Rodono Industries to discuss the issue.
- 7: The U-Joint can be taken off the old swing and put on the new Xtend swing. The center of the u-joint must be placed in line with the swivel. This can be done by measuring the height above the ring with a straight edge across the bottom of the ring. See the proper value for dimension A in the table below. If it does not look correct you can take one of the swing bolts out and look through the hole in the bushing and see if the u-joint bearing is in line with the pivot. If you are sure it is in line you can lock it in place on the upper shaft.
- 8: The Xtend swing can be lowered into place on the main auger using the same lift system that you lifted the old one off. Grease the lower spline before lowering the auger. The u-joint can be aligned through the door on the in the side of the collector. Lower the Xtend auger into place.
- 9: The bolts and washers can be put back in place to hold the ring down. If they are adjustable, there should be clearance between the ring and the bushing on the bolts so that the ring is free to turn and shift a small amount if necessary.



13" Brandt HP- (A) Deck to Pivot (Inches) - 5 7/8"

Operation

The Xtend Swing auger adds two functions to a normal swing auger.

1: The ability to extend and retract.

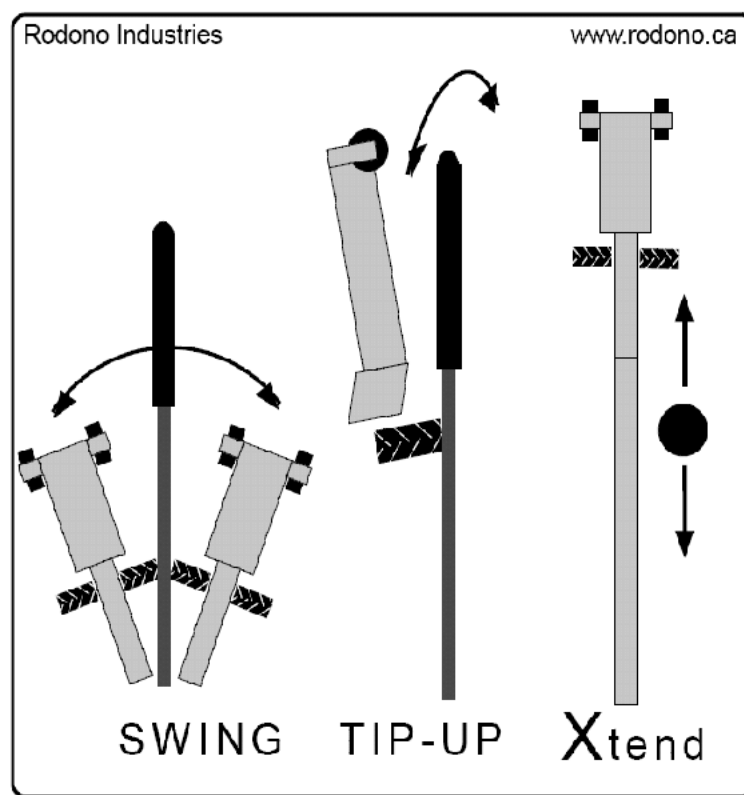
2: The ability to tilt the end of the hopper up or down.

This allows the machine to either extend or swing.

The swing auger also has power swing.

All controls for these functions are conveniently located at the end of the swing tube where the operator has easy access to the handles on the trailer for opening the chute gates.

The controls are clearly identified on the label by the controls (Shown Below)



Notes on hydraulics and capacity

The tractor hydraulic flow to this unit should be turned down. This will help prevent damage to the equipment and the operator. The flow should be turned down to the point where the operator is comfortable with the swing speed and the retraction speed while holding onto the controls.

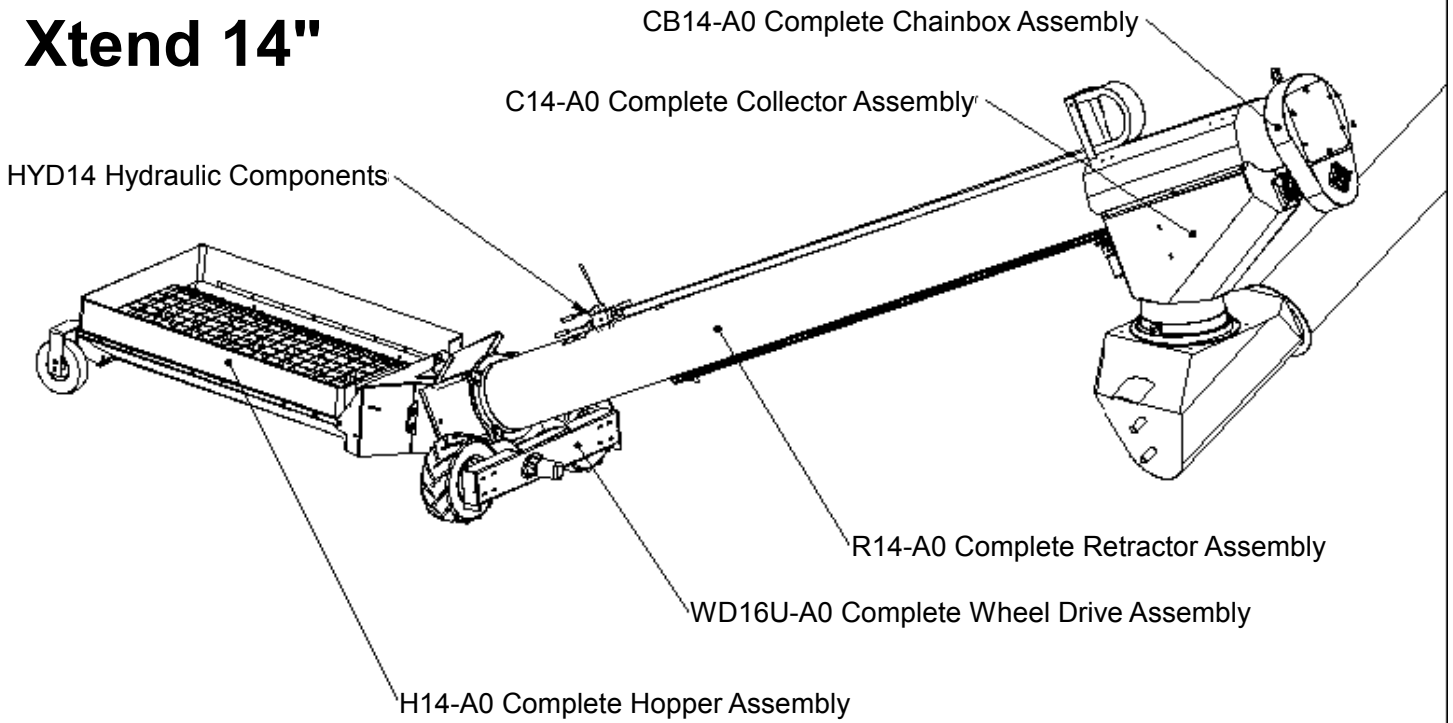
As with all swing augers. It is possible for the swing to overfeed the main auger if the main auger is approaching or exceeding its maximum angle. The auger capacity drops significantly with increased angle. Whereas the angle on the swing changes very little in comparison, so it is possible for the swing to overfeed the main auger.

Order of Operations

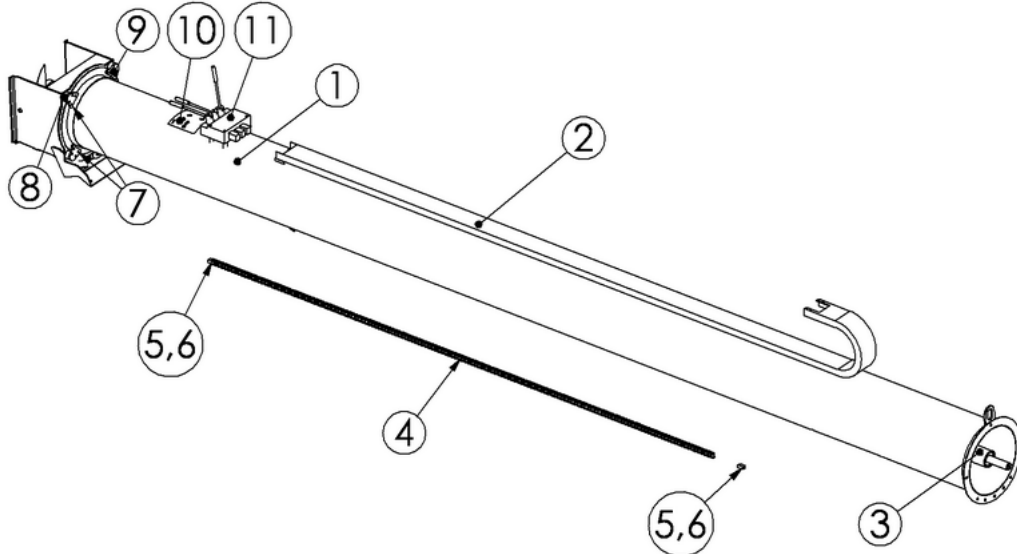
- 1: Lower swing from transport, Swing around to appropriate unloading position. Roughly perpendicular to auger. (The only limitation to placement is that clear retraction should be possible without hitting your tractor cab)
 - 2: Retract Xtend auger all they way.
 - 3: Drive truck in so that you are roughly 2 feet from the end of the hopper and stop roughly between the appropriate hoppers.
 - 4: Extend hopper under trailer (With Tip Down)
 - 5: Raise hopper tip slightly off the ground and swing to position roughly centered below appropriate chute.
 - 6: Lower hopper tip onto ground
 - 7: ENGAGE PTO on tractor or power unit.
 - 8: Unload until empty and close chute
 - 9: Raise hopper tip
 - 10: Swing to other chute.
 - 11: Lower hopper tip onto ground.
 - 12: Unload until empty and close chute.
 - 13: DISENGAGE PTO on tractor or power unit.
 - 12: Retract Xtend auger fully.
 - 13: Move next trailer or truck into place as appropriate.
- Back to Step 4.

The Xtend auger may be swung or retracted freely with the PTO running as long as the spline shaft at the top does not become disengaged. On the 14" Xtend there is 24" of free movement back from full extension. The end of free working travel is indicated by the "Rodono Xtend" Decal starting to disappear under the collector cover.

Xtend 14"



R14-A0 Retractor Assembly

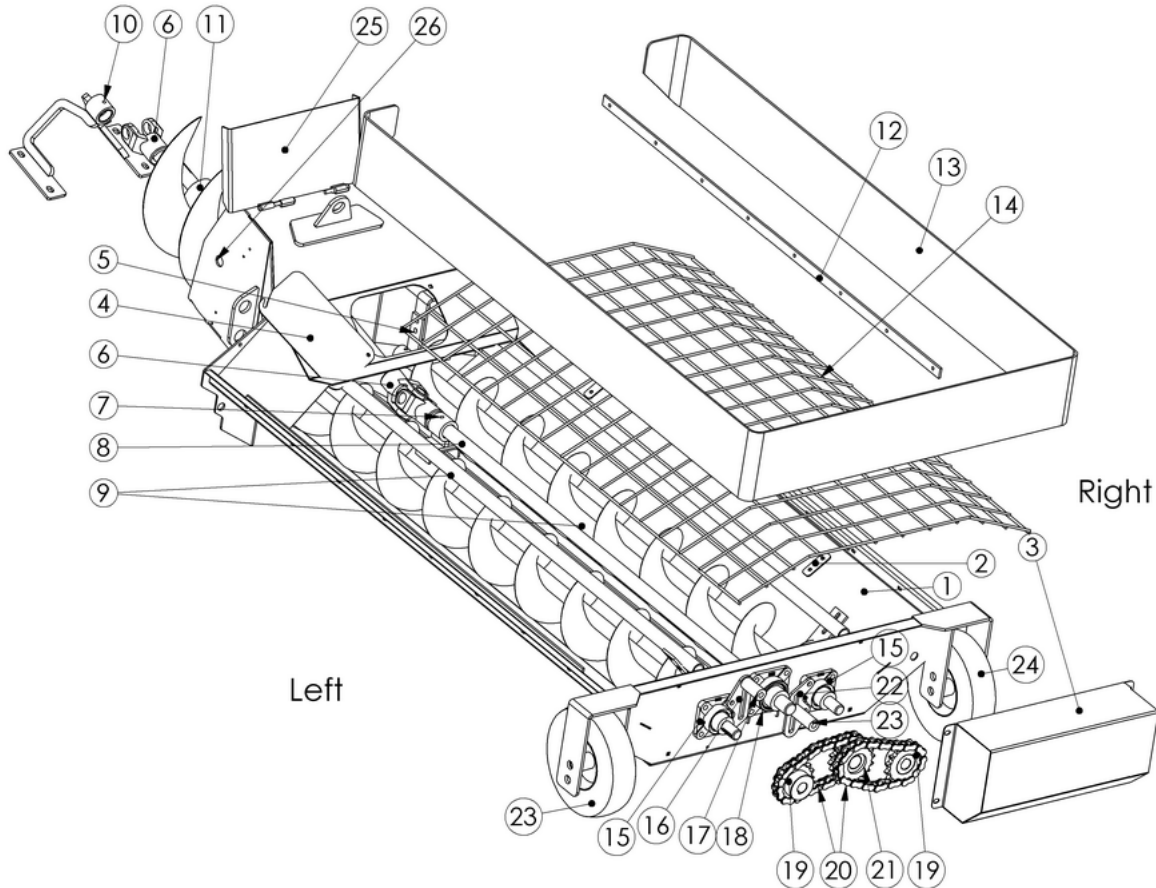


Item	Qty	Part #	Description
0	1	R14-A0	Complete Retractor Assembly
1	1	R14-A1	Welded Retractor
2	12'	IG200-10-125	Hose Carrier Chain
	4	H5CZ14.012	1/4" NC x 1/2" Bolt
	4	LWZ14	1/4" Lock Washers
	1	IG2000-20	Carrier Bracket
	1	IG2000-21	Carrier Bracket
3	1	R14-20	Main Screw Assembly
4	1	CHA-60-120.75	Rack Chain
5	2	CHA-60-1R-CO	Connecting Link
6	2	RP-2	Sliding Tightener
	2	H8CZ516-214	5/16" NC GR8 x 2 1/4" Bolt
	2	N8CZ516	5/16" NC GR8 Nut

Item	Qty	Part #	Description
7	14	BW1-250	Wear Button
8	4	R14-35	Swivel Spacer Block
9	2	R14-34	Swivel Flange Holder
10	1	XO1	Operator Decal
11	1	HV-3	Hydraulic Valve Assembly
	3	H5CZ516.214	1/4" NX x 2 1/4" Bolt
	3	LWZ516	Lockwasher

Notes

See Hydraulic Assembly for Valve Fittings



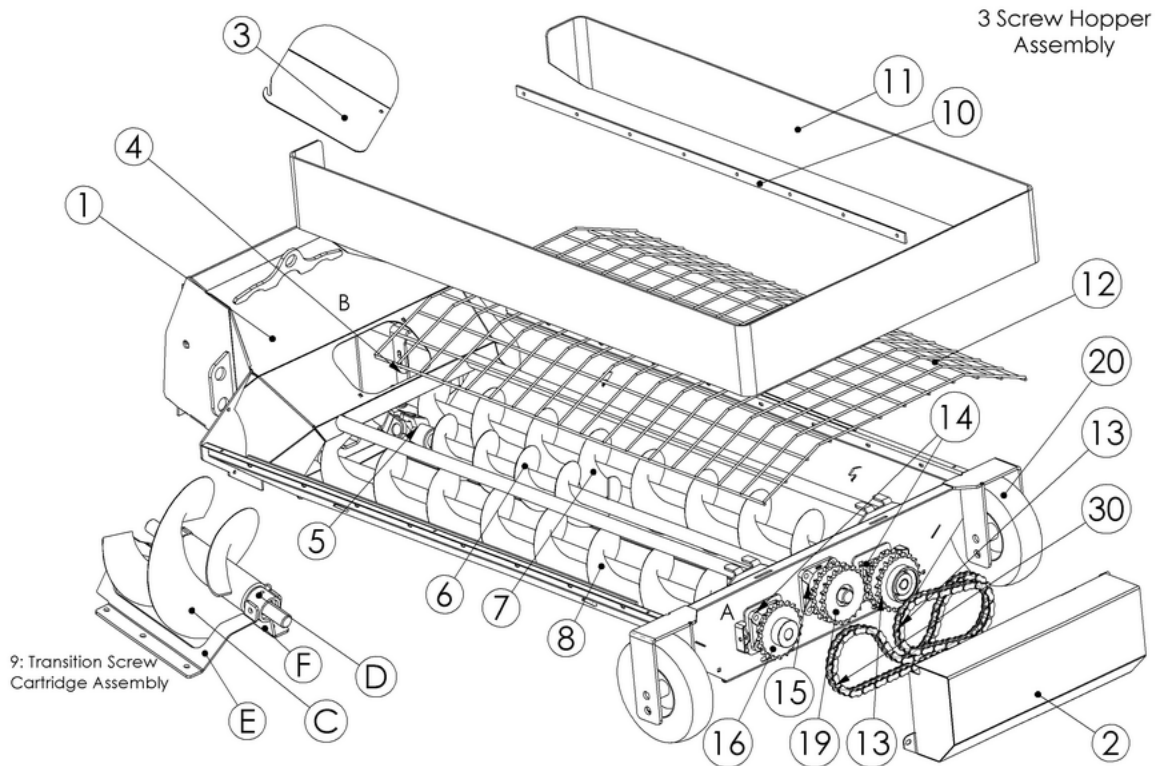
Item	Qty	Part #	Description
0	1	H14-A0	Complete Hopper Assembly
1	1	H14-A1	Welded Hopper
2	4	HC-4	Mesh Hold Down
	8	H5CZ14.34	1/4" NC x 3/4" Bolt
	8	LNCZ14	1/4" Nylon Lock Nuts
3	1	H16-21	Chain Guard Assembly
	4	NWCZ516	5/16" Wing Nut
4	1	HC-35	Transition Inspection Cover
	1	LNCZ516	5/16" Nylon Lock Nut
	1	FWZC516	5/16" USS Flat Washer
	1	NWCZ516	5/16" Wing Nut
5	1	H16-A4	Feed Screw Bushing Hanger Right
	1	B150-1875-150	Bronze Bushing
	1	H16-A3	Feed Screw Bushing Hanger Left
	1	B150-1875-150	Bronze Bushing
	4	H5CZ38.114	Bolt 3/8" NC x 1 1/4"
	4	N5CZ38	Nut 3/8" NC
	4	FWSAEZC38	Flatwasher SAE 3/8"
	4	LWZ38	Lockwasher 3/8"
6	2	UA800-1220	U-Joint Assembly
	4	K25-15	Key 1/4" x 1 1/2"
7	1	H13-A33	Jack Shaft Bushing Assembly
	1	B125-150-150	Bronze Bushing
	2	N5CZ38	Nut 3/8" NC
	2	FWSAEZC38	Flatwasher SAE 3/8"
	2	LWZ38	Lockwasher 3/8"
8	1	H14-27	Hopper Jack Shaft
* 9	2	H14-A5	Feed Screw Assembly L&R
10	1	H14-A2	Upper Transition Bushing Support
	1	B125-150-150	Bronze Bushing
	4	H5CZ38.114	Bolt 3/8" NC x 1 1/4"
	4	FWSAEZC38	Flatwasher SAE 3/8"
	4	LNCZ38	Nylon Lock Nut 3/8" NC
11	1	H14-A22	Transition Screw Assembly
12	2	H16-56	Skirt Retainer
	8	H5CZ14.34	1/4" NC x 3/4" Bolt
	8	LWZ14	Lockwasher 1/4"
	8	N5CZ14	Nut 1/4" NC

Item	Qty	Part #	Description
13	1	H14-58	Skirt
14	1	MESH-16	Mesh
15	2	F208-24G	Bearing Assembly
	4	H5CZ12.112	Bolt 1/2" NC x 1 1/2"
	4	H5CZ12.134	Bolt 1/2" NC x 1 3/4"
	8	LWZ12	Lockwasher 1/2"
	8	N5CZ12	Nut 1/2" NC
16	2	H14-54	Chain Tensioner Bracket (Left)
17	1	PT-H14-H16-L	Chain Tensioner (2 3/4" Long)
	1	CBZ12.312	Carrage Bolt 1/2" NC 3 1/2"
	1	FWSAEZC12	Flatwasher SAE 1/2"
	1	LNCZ12	Nylon Lock Nut 1/2" NC
18	1	F206-20G	Bearing Assembly
	4	H5CZ716.112	Bolt 7/16" NC x 1 1/2"
	4	LWZ716	Lockwasher 7/16"
	4	N5CZ716	Nut 7/16" NC
19	2	WH24-SP6021X	Hub and Sprocket
	2	K38-100	Key 3/8" x 1"
20	2	CHA-60-27.5	Chain
	2	CHA-60-1R-CO	Connecting Link
	2	CHA-60-1R-OF	Offset Link
21	1	WDH20-SP6016X	Hub with Double Sprocket
	1	K25-150	Key 1/4" x 1 1/2"
22	1	H14-55	Chain Tensioner Bracket (Right)
23	1	PT-H14-H16-R	Chain Tensioner (3 3/4" Long)
	1	CBZ12.412	Carrage Bolt 1/2" NC 4"
	1	FWSAEZC12	Flatwasher SAE 1/2" (Optional)
	1	SLNC12	Stover Lock Nut 1/2" NC
24	2	WS10x4	Solid Wheels
	2	H5CZ34.512	Bolt 3/4" NC x 5 1/2"
	2	LNCZ34	Nylon Lock Nut
25	1	H14-A8	Transition Cover Assembly
26	2	H5CZ34-112	Bolt 3/4" NC x 1 1/2"
	2	LNCZ34	Nylon Lock Nut
	2	FWSAEZC34	Flatwasher SAE 3/4"
	2	B75-100	Spacer Bushing

Notes:

This Hopper design was used from 2010 to end of 2015 on Brandt HP only

*H16-A513 can be used which is double flighted

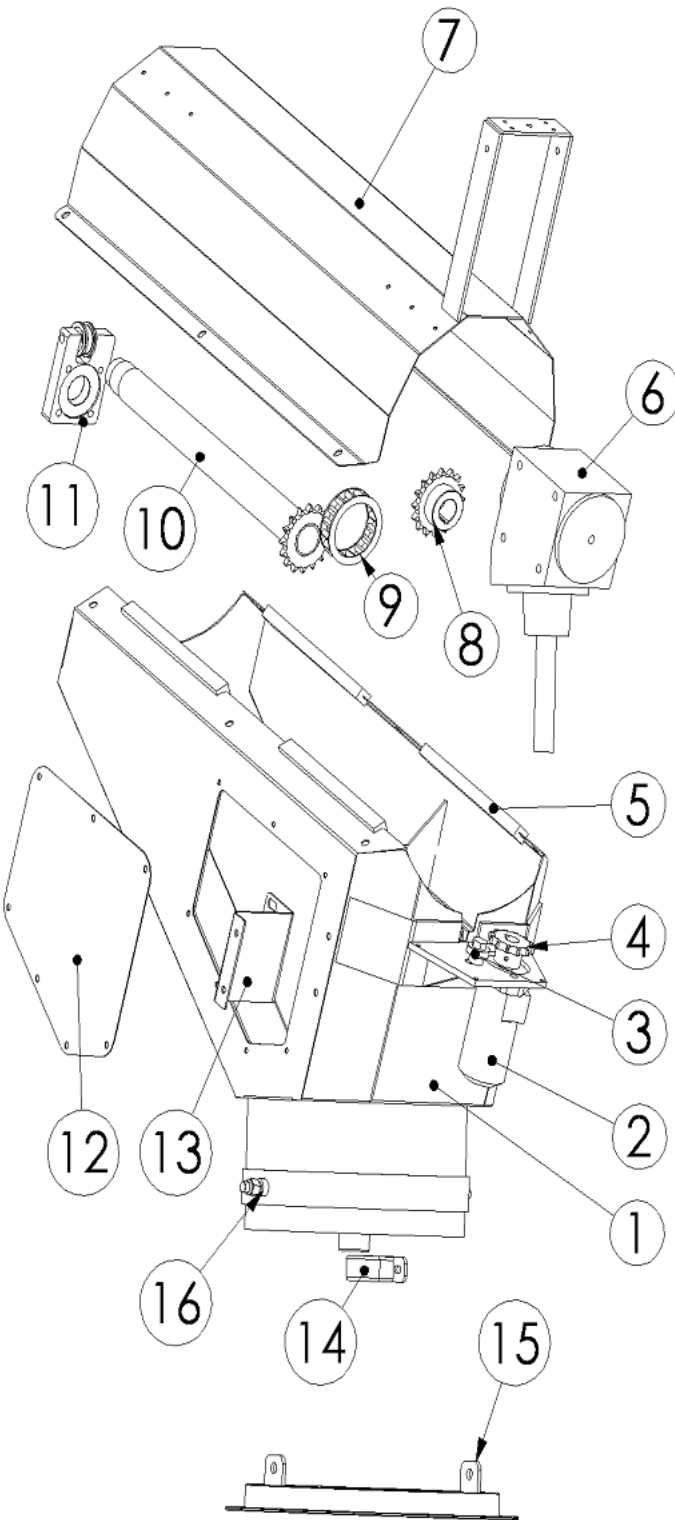


3 Screw Hopper Assembly

Item	Qty	Part #	Description
0	1	H13-A500	Complete Hopper Assembly
1	1	H13-A501	Welded Hopper
2	1	H13-521	Chain Guard Assembly
	2	NWCZ516	5/16" Wing Nut
3	1	HC-36	Transition Inspection Cover
	1	LNC516	5/16" Nylon Lock Nut
	1	FWC516	Flatwasher USS 5/16"
	1	NWCZ516	5/16" Wing Nut
4	2	H13-A3	Feed Screw Bushing Hanger L & R
ref		B100-125-150	Bronze Bushing
	4	H5CZ38-114	Bolt 3/8" NC x 1 1/4"
	4	NHCZ38	Nut 3/8" NC
	8	FWSAEZC38	Flatwasher SAE 3/8"
	4	LWZ38	Lockwasher 3/8"
5	2	X13-12RBL20	U-Joint Assembly 12 series 1 1/4"
	4	K25-15	Key 1/4" x 1 1/2"
6	1	H13-527	Hopper Jack Shaft with flighting
7	1	H13-503R	Feed Screw Assem RH w/Snap Ring
8	1	H13-504L	Feed Screw Assem LH
9	1	H13-A505	Transition Screw Cartridge Assem
	4	H5CZ12-114	Bolt 1/2" x 1 1/4"
	4	LNC12	Nylon Lock Nut 1/2"
10	2	H13-56	Skirt Retainer
	8	H5CZ14-034	1/4" NC x 3/4" Bolt
	8	FWC14	Flat Washer USS 1/4"
	8	LNC14	Nylon Lock Nut 1/4"
	16	LWZ14	Lockwasher 1/4"
	16	SLCC14	Stover Lock Nut 1/4" NC
11	1	H13-55	Skirt
12	1	H13-MESH	Mesh
13	1	WDH16-21T	Idler Sprocket Assembly
	1	2879	Snap Ring (IAR 2879)
	1	W2-125x0.4	Flat Washer
	1	SFF38-34	Flat Head Bolt
A	1	XW5	Missing Shield Decal
B	1	XW3	Rotating Flighting Decal

Item	Qty	Part #	Description
14	2	F205-16G	Bearing Assembly
	2	H13-78	Sliding Chain Tensioner Plate
	8	H5CZ716-112	Bolt 7/16" NC x 1 1/2"
	8	LWZ716	Lockwasher 7/16"
	8	NHCZ716	Nut 7/16" NC
	2	CBZ516-112	Carriage Bolt 5/16"NC 1 1/2"
	1	LNC516	Nylon Lock Nut 5/16" NC
15	1	F206-20G	Bearing Assembly
	4	H5CZ716-112	Bolt 7/16" NC x 1 1/2"
	4	FWC716	Flat Washer 7/16"
	4	LWZ716	Lockwasher 7/16"
	4	NHCZ716	Nut 7/16" NC
16	2	SH-60B21-16	Hub and Sprocket
	2	K25-100	Key 1/4" x 1"
17	1	CHA-60-28.5	Chain #60 x 28 1/2"
	1	CHA-60-1R-OF	Offset Connecting Link
	2	CHA-60-1R-CO	Connecting Link
18	1	CHA-60-44.5	Chain #60 x 44 1/2"
19	1	WDH20-SP6021X	Hub with Double Sprocket
	1	K25-150	Key 1/4" x 1 1/2"
20	2	WS10x4	Solid Wheels
	2	H5CZ34-512	Bolt 3/4" NC x 5 1/2"
	2	LNC34	Nylon Lock Nut
21	1	H13-A8	Transition Cover Assembly
9		H13-A505	Transition Screw Cartridge Assembly
C		H13-A122	Welded Transfer Screw Assembly
D		H13-A123	Bearing Assembly
		B11-1.25ID-1.50D	Bronze Bushing
		SEA 471766	Seal (CR 12458)
		B510-1.5	Bushing Holder
		GF 610	Grease Zerk
		H8CZ12-034	1/2" G8 x 3/4" Bolt
		LWBZ12	Lock Washer 1/2"
E		H14-542	Transition Bushing Support Left
F		H13-543	Transition Bushing Support Right

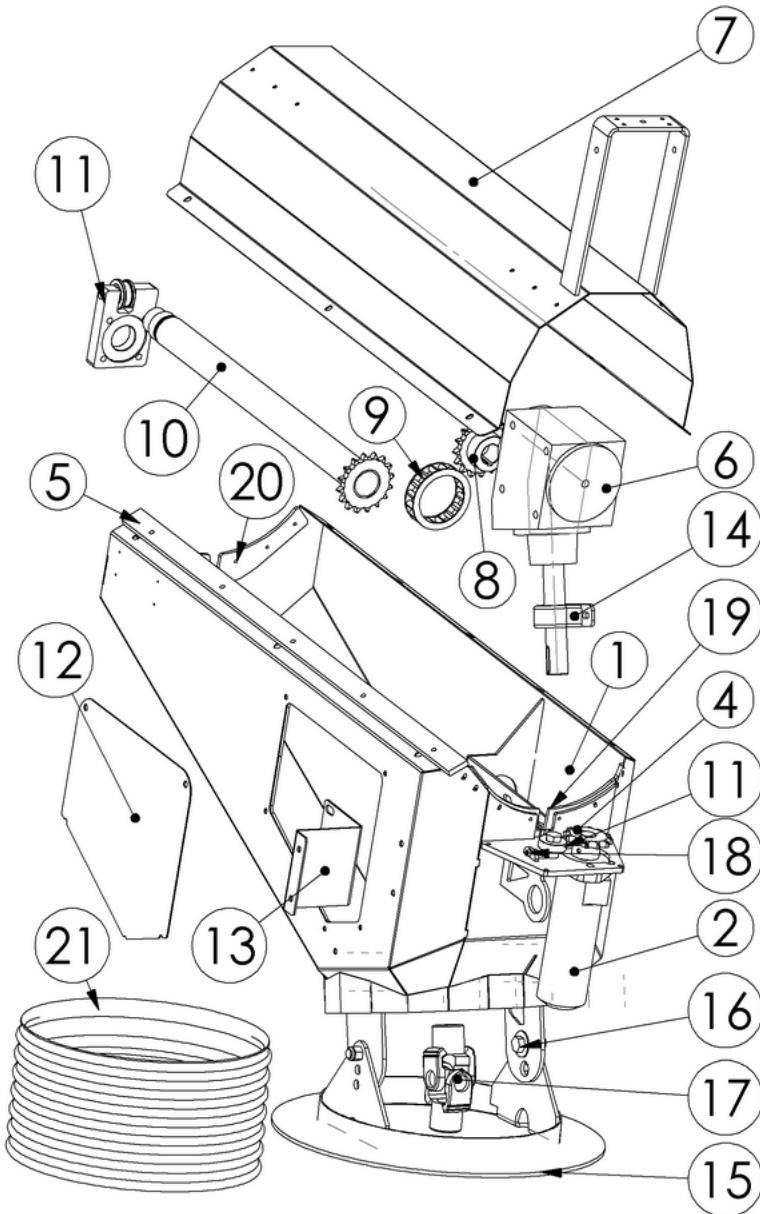
C14-A0 Collector Assembly



Item	Qty	Part #	Description
0	1	C14-A0	Complete Collector Assembly
1	1	C14-A1	Welded Collector Body
2	1	ZMBR-Motor	Pinion Brake Motor
3	1	6303-2RS	Pinion Roller
	1	B3-.625ID	Pinion Roller Spacer
	1	H5CZ58.2	Bolt 5/8" NC
	1	FWSAEZ58	Washer 5/8" SAE
	1	LNC58	Lock Nut 5/8"
4	1	WH16-SP6012X	Pinion Sprocket
5	4	W1x0.75x0.5t	Wear Strip
6	1	XGB13	Gearbox 13
	4	H5CZ12.114	Bolts 1/2" NC x 1 1/4"
	4	FWZC12	Flat Washer 1/2"
	4	LWZ12	LockWasher 1/2"
7	1	C14-6	Collector Cover
	6	H5CZ516.114	Bolt 5/16" NC x 1 1/4"
	6	FWZC516	Flat Washer 5/16"
	6	NHC516	Nut 5/16" NC
8	1	H22-SP6016XSPC	Hub with Stop
	1	K516-1	Key 5/16" x 1"
9	1	CHA 60-2R-11.25	Double Chain
	1	CHA 60-2R-CO	Connecting Link
10	1	CC-A12-14	Spline Tube Assembly 14
11	1	CRF-1	Flange (CRF-A2 includes parts)
	1	CC-10	Track Roller
	2	1621-2RS	Bearing for Track Roller
	3	FWSAEZ12	Flatwasher 1/2" SAE
	1	H5CZ12.5	Bolt 1/2" NC x 5"
	1	LNC12	Nylon Lock Nut 1/2"
	1	6209-2RS	Spline Tube Bearing
	2	C-2	Collector Stop
	2	SCC38.214	Socket Cap 3/8" x 2 1/4"
	2	LNC38	Nylon Lock Nut 3/8"
	2	H5CZ38.134	Bolt 3/8" NC x 1 3/5"
	2	LWZ38	Lockwasher 3/8"
	2	NHC38	Nut 3/8" NC
12	1	C14-28	Door
	7	NWCZ516	Wing Nut
13	1	C14-38	Gearbox Z Bracket
	2	H5CZ12.114	Bolts 1/2" NC x 1 1/4"
	2	FWZC12	Flat Washer 1/2"
	2	LWZ12	LockWasher 1/2"
	2	H5CZ38.1	Bolt 3/8" NC x 1"
	2	LWZ38	Lockwasher 3/8"
	2	NHC38	Nut 3/8" NC
14	1	PBW-22	Gearbox Lower Steady
	2	H5CZ38.114	Bolt 3/8" NC x 1 1/4"
	2	LWZ38	Lockwasher 3/8"
	2	NHC38	Nut 3/8" NC
15	1	SRF*	Swing Ring (Model Dependant)
16	2	SRB*	Swing Ring Spacer Bushing
	2	SRF*	Fastener Set (Model Dependant)
		*	See Swing Ring Sheet for Part #

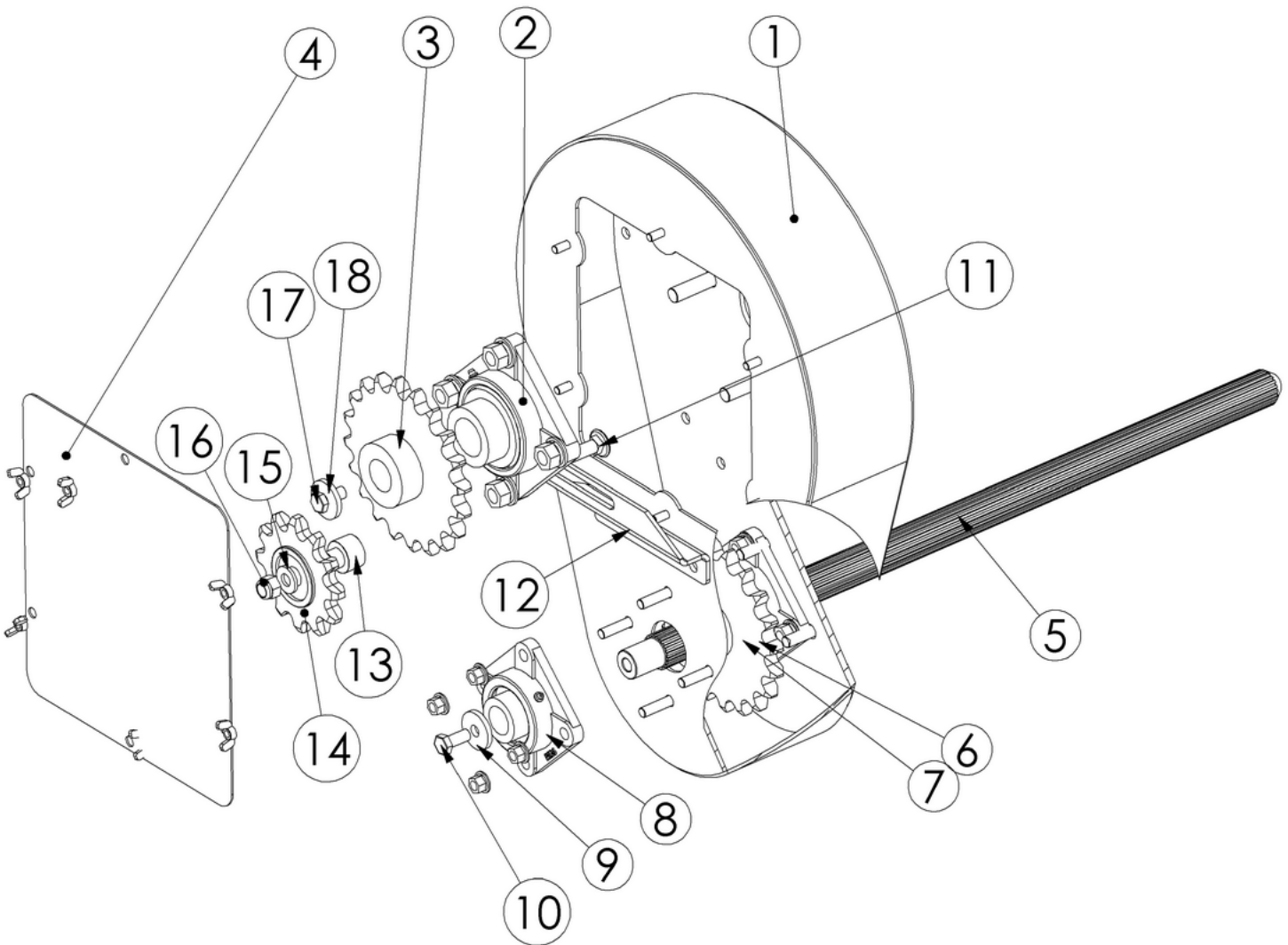
UC1314-A100 Collector Assembly

Item	Qty	Part #	Description
0	1	UC1314-A0	Complete Collector Assembly
1	1	UC1314-A1	Welded Collector Body
2	1	ZMBR-200P4A11Y5	Pinion Brake Motor
3	1	6203-5/8-2RS	Pinion Roller
	1	B3-.625ID	Pinion Roller Spacer
	1	H5CZ58.2	Bolt 5/8" NC
	1	FWSAEZ58	Washer 5/8" SAE
	1	LNC58	Lock Nut 5/8"
4	1	WH16-SP6D12X	Pinion Sprocket
5	2	UC14-663	Wear Strip
6	1	XGB13	Gearbox 13
	4	H5CZ12.114	Bolts 1/2" NC x 1 1/4
	4	FWZC12	Flat Washer 1/2"
	4	LWZ12	LockWasher 1/2"
7	1	UC13-A606	Collector Cover
	4	W3	Collector Cover Wear Strip
	12	FHSC14-34	Flat Head Socket Cap 1/4NC x 3/4
	12	LNC14	Nylon Lock Nut 1/4" NC
	6	H5CZ516.114	Bolt 5/16" NC x 1 1/4"
	6	FWZC516	Flat Washer 5/16"
	6	NHC516	Nut 5/16" NC
8	1	H22-SP6D16K5PC	Hub with Stop
	1	KS16-1	Key 5/16" x 1"
9	1	CHA 60-2R-1L.25	Double Chain
	1	CHA 60-2R-CO	Connecting Link
10	1	CC-A12-DH1314	Spline Tube Assembly 13
11	1	CRF-A1	Hange for Bearing and Roller
	1	CRF-1	Aluminum Bearing Flange
	1	CC-10	Track Roller
	2	1621-2RS	Bearing for Track Roller
	3	FWSAEZ12	Flatwasher 1/2" SAE
	1	H5CZ12.5	Bolt 1/2" NC x 5"
	1	LNC12	Nylon Lock Nut 1/2"
	1	6209-2RS	Spline Tube Bearing
	2	C-2	Collector Stop
	2	SCC38.214	Socket Cap 3/8" x 2 1/4"
	2	LNC38	Nylon Lock Nut 3/8"
	2	H5CZ38.134	Bolt 3/8" NC x 1 3/5"
	2	LWZ38	Lockwasher 3/8"
	2	NHC38	Nut 3/8" NC
12	1	C13-28	Door
	7	NWCZ516	Wing Nut
13	1	C13-38	Gearbox Z Bracket
	2	H5CZ12.114	Bolts 1/2" NC x 1 1/4
	2	FWZC12	Flat Washer 1/2"
	2	LWZ12	LockWasher 1/2"
	2	H5CZ38.1	Bolt 3/8" NC x 1"
	2	LWZ38	Lockwasher 3/8"
	2	NHC38	Nut 3/8" NC
14	1	PBW-22	Gearbox Lower Steady
	2	H5CZ38.114	Bolt 3/8" NC x 1 1/4"
	2	LWZ38	Lockwasher 3/8"
	2	NHC38	Nut 3/8" NC
15	1	SRR*	Swing Ring (Model Dependant)
16	2	SRB*	Swing Ring Spacer Bushing
	2	SRF*	Fastener Set (Model Dependant)
17	1	U-Joint	See Table
18	1	SHCS14-212	Jack Screw
	1	LNC14	Nylon Lock Nut
19	2	UC1314-59	CB Side Seal
20	2	C34-57	Pinion Side Seal
	14	SS10-32 x 1	10-32 x 1" Machine Screw
	14	SSLNC10	10-32 SS Nylon Lock Nut
21	1	DH16	Dust Hose (See Table for Length)
		*	See Swing Ring Sheet for Part #



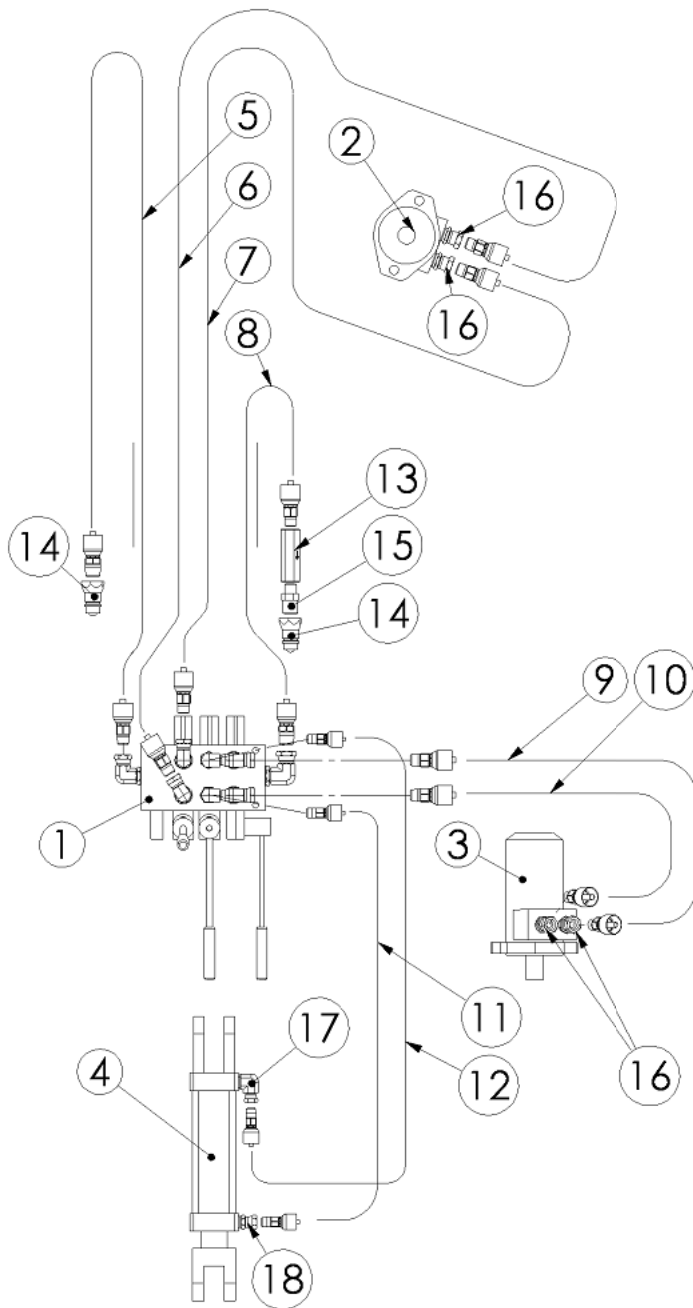
17	Farm King 13*	All Years	Buhler #90784
	*The old u-Joint Buhler will not work with this collector		
	Brandt	Factory U-joint for Auger	
	West Field/ Wheatheart	Rodono	UA12-14SPL114-138

CB14-A0 Chainbox Assembly

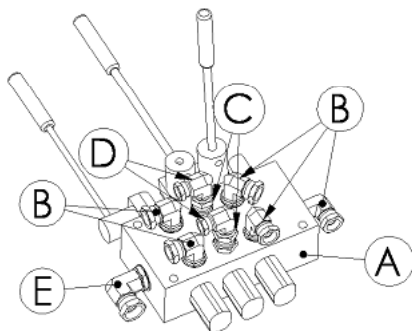


Item	Qty	Part #	Description
0	1	CB14-A0	Complete Chain Box Assembly
*	4	H5CZ716.1	7/16" NC x 1" Bolt
*	3	H5CZ716.112	7/16" NC x 1 1/2" Bolt
*	7	LWZ716	7/16" Lockwasher
*	7	N5CZ716	7/16" NC Nut
1	1	CB14-A1	Welded Chainbox
2	1	F208-G1108KRRB	Bearing Assembly w/Lock Collar
	4	H5CZ716.112	7/16" NC x 1 1/2" Bolt
	4	LWZ716	7/16" Lockwasher
	4	N5CZ716	7/16" NC Nut
3	1	WH24-SP8020X	Hub with 8020 Sprocket
4	1	K375-1375	3/8" Key
	1	CB13-44	Chain Box Door
	6	WNC516	5/16" Wing Nut
5	1	CB-35-16	Upper Spline Shaft
6	1	F207-22UC	Bearing Assembly
	4	H5CZ716.112	7/16" NC x 1 1/2" Bolt
	4	LWZ716	7/16" Lockwasher
	4	N5CZ716	7/16" NC Nut

Item	Qty	Part #	Description
7	1	WSH-SP8020X	Spline Hub with #80-20 Sprocket
8	1	F206-18G	Bearing Assembly w/Lock Collar
	4	H5CZ38.114	3/8" NC x 1 1/4" Bolts
	4	LWZ38	Lock Washers
	4	N5CZ38	3/8" NC Nut
9	1	FW.52x1.75x.2	Heavy Washer
10	1	H5FZ12.34	1/2" Fine x 3/4" Bolt
11	1	CBZ38.234	Carriage Bolt
12	1	CBC-1	Tightener Z Bracket
13	1	CBC-2-14	Tightener Spacer
14	1	ID80A12-3/4	Idler Sprocket
15	1	FWSAE12	SAE Flatwasher
16	1	LNC12	Nylon Lock Nut
17	1	H5CZ38.1	3/8" NC x 1" Bolt
18	1	FW.4x1.5x.2	Heavy Washer
19	1	CHA-80-43	Drive Chain
*	1	CHA-80-1R-CO	Connecting Link
*	1	CHA-80-1R-OF	Offset Link
* Not Shown			

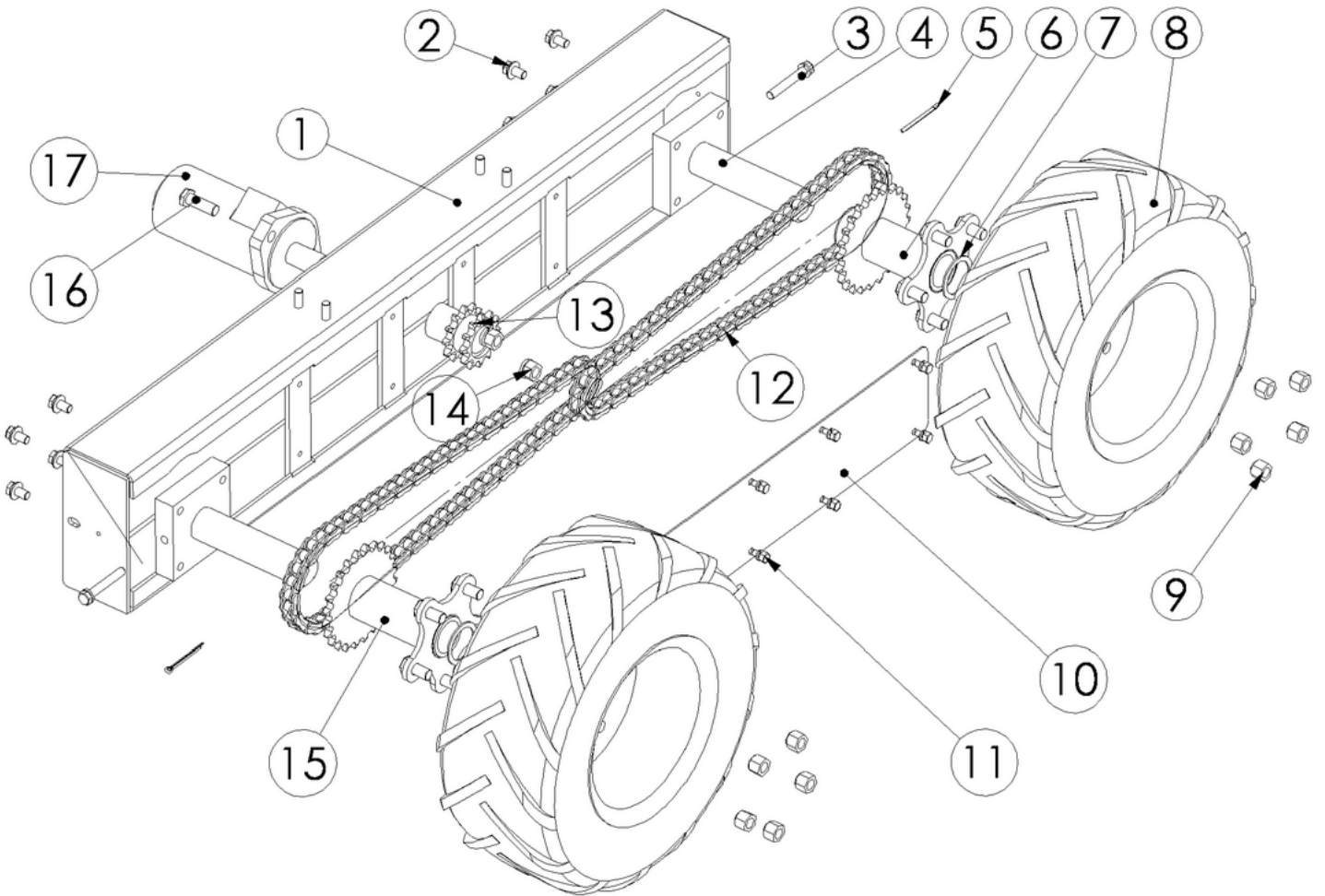


Item	Qty	Part #	Description	Connection
1	1	RC-A2	Valve Assembly (with fittings)	
2	1	ZBMR-Motor	Pinion Brake Motor	
3	1	101-1032	Wheel Drive Motor (or BMPH)	
4	1	25TL04-112	Tilt Cylinder (with pins)	
5	1	HYD-5	Hose Assembly	
	32'	HOS 301-6	3/8" 2 wire hose	Coupler Valve
	1	10143-8-6	1/2" NPT Hose End	
	1	10143-6-6	3/8" NPT Hose End	
6	1	HYD-6	Hose Assembly	
	200'	HOS 301-6	3/8" 2 wire hose	Valve Motor
	1	10143-6-6	3/8" NPT Hose End	
	1	10143-6-6	3/8" NPT Hose End	
7	1	HYD-6	Hose Assembly	
	200'	HOS 301-6	3/8" 2 wire hose	Valve Motor
	1	10143-6-6	3/8" NPT Hose End	
	1	10143-6-6	3/8" NPT Hose End	
8	1	HYD-5	Hose Assembly	
	32'	HOS 301-6	3/8" 2 wire hose	Valve Coupler
	1	10143-8-6	1/2" NPT Hose End	
	1	10143-6-6	3/8" NPT Hose End	
9	1	HYD13-9	Hose Assembly	Wheel Drive
	50'	HOS 301-6	3/8" 2 wire hose	Valve Motor
	1	10143-6-6	3/8" NPT Hose End	
	1	10143-6-6	3/8" NPT Hose End	
10	1	HYD13-9	Hose Assembly	Wheel Drive
	50'	HOS 301-6	3/8" 2 wire hose	Valve Motor
	1	10143-6-6	3/8" NPT Hose End	
	1	10143-6-6	3/8" NPT Hose End	
11	1	HYD13-11	Hose Assembly	Cylinder
	76"	HOS 301-4	1/4" 2 wire hose	Valve Rod-End
	1	10143-4-4	1/4" NPT Hose End	
	1	10143-4-4	1/4" NPT Hose End	
12	1	HYD13-12	Hose Assembly	Cylinder
	81"	HOS 301-6	1/4" 2 wire hose	Valve Clevis End
	1	10143-4-4	1/4" NPT Hose End	
	1	10143-4-4	1/4" NPT Hose End	
13	1	C-375-S-5	3/8" Check Valve	
14	2	8010-4	Pioneer Coupler Male	
15	1	0101-6-8	3/8" MNPT to 1/2" MNPT Adapter	
16	4	0107-8-6	1/2" M to 3/8" F Swivel	
17	1	2107-6-4	3/8" M to 1/4" F Swivel 90	
18	1	0107-6-4	3/8" M to 1/4" F Swivel	



RC-A2		Valve Assembly (with fittings)		
Item	Qty	Part #	Description	
A	1	VLV-3SP	Valve with Handles	
B	5	2507-8-6	#8 ORB to 3/8" FNPT 90 Swivel	
C	2	0507-8-6	#8 ORB to 3/8" FNPT Swivel	
D	1	2107-6-4	3/8" M to 1/4" F Swivel 90	
E	1	2507-10-8	#10 ORB to 1/2" FNPT 90 Swivel	

WD16U-A0 Wheel Drive Assembly



Item	Qty	Part #	Description
0	1	WD16U-A0	Wheel Drive Assembly
	4	N8CZ38	3/8" NC Gr 8 Nut
	4	LWZ838	Lockwasher 3/8" Gr 8
	4	FWZ838	Flat Washer 3/8" Gr 8
1	1	WD16U-A1	Welded Wheel Drive Frame
2	8	H8CZ38.34	Bolt 3/8" NC Gr 8 x 3/4"
	8	LWZ838	Lockwasher 3/8" Gr 8
	8	FWZ838	Flat Washer 3/8" Gr 8
3	2	H5CZ38.212	Bolt 3/8" NC Gr 5 x 2 1/2"
	2	LWZ38	Lockwasher 3/8"
4	2	WD-A4	Hub Assembly
5	2	CP316-200	Cotter Pin
6	1	WD-A3	Outer Rotating Hub
7	2	W150-200	Machine Washer

Item	Qty	Part #	Description
8	2	TSL16	Super Lug 16" Wheel and Tire
9	10	WB11	Wheel Nut
10	1	WD13-14	Front Stiffener
11	8	LWZ14	Lock Washers
	8	H5CZ14.12	Bolt 1/4"NC x 1/2"
12	2	CHA50-46	50 Roller Chain
	2	CHA50-1R-CO	50 Connecting Link
13	1	WD16-A4	Dual Drive Hub
14	2	CBC-1	Nut 1/2" NC
	2	LWZ12	Lock Washers
15	1	WD-A2	Inner Rotating Hub
16	2	H5CZ12.112	Bolt 1/2" NC x 1 1/2"
17	1	BMPH	Drive Motor

Revised March 1/2011

Maintenance

Greasing Schedule					
Decsription	Qty	Location	Frequency	Diagram	Item
U-Joints	1	Lower Hopper	80 hrs Operation	Hopper	6
	1	Upper Hopper	80 hrs Operation	Hopper	6
	1	Collector	80 hrs Operation	Swing Ring	6
Bushings	2	Hopper Feed Screw	8 hrs Operation	Hopper	5
	1	Hopper Jack Shaft	8 hrs Operation	Hopper	7
	1	Transition Screw	8 hrs Operation	Hopper	10
Bearings	2	Hopper Feed Screw	200 hrs Operation	Hopper	15
	1	Jack Shaft	200 hrs Operation	Hopper	18
	3	Chain Box Bearings	200 hrs Operation	Chain Box	2,6,8

Oil Schedule	
Chain Box	Greased at Factory- Add Grease through zerk - 80 hrs
Gearbox	Fill to Level SAE 90 Initially- Check and Maintain Level Yearly
Spline Shaft	Apply Light Oil- Monitor and Keep Clean and Lightly Oiled Apply Grease for Storage
Hopper Drive Chain	Apply oil when greasing- 80 hrs

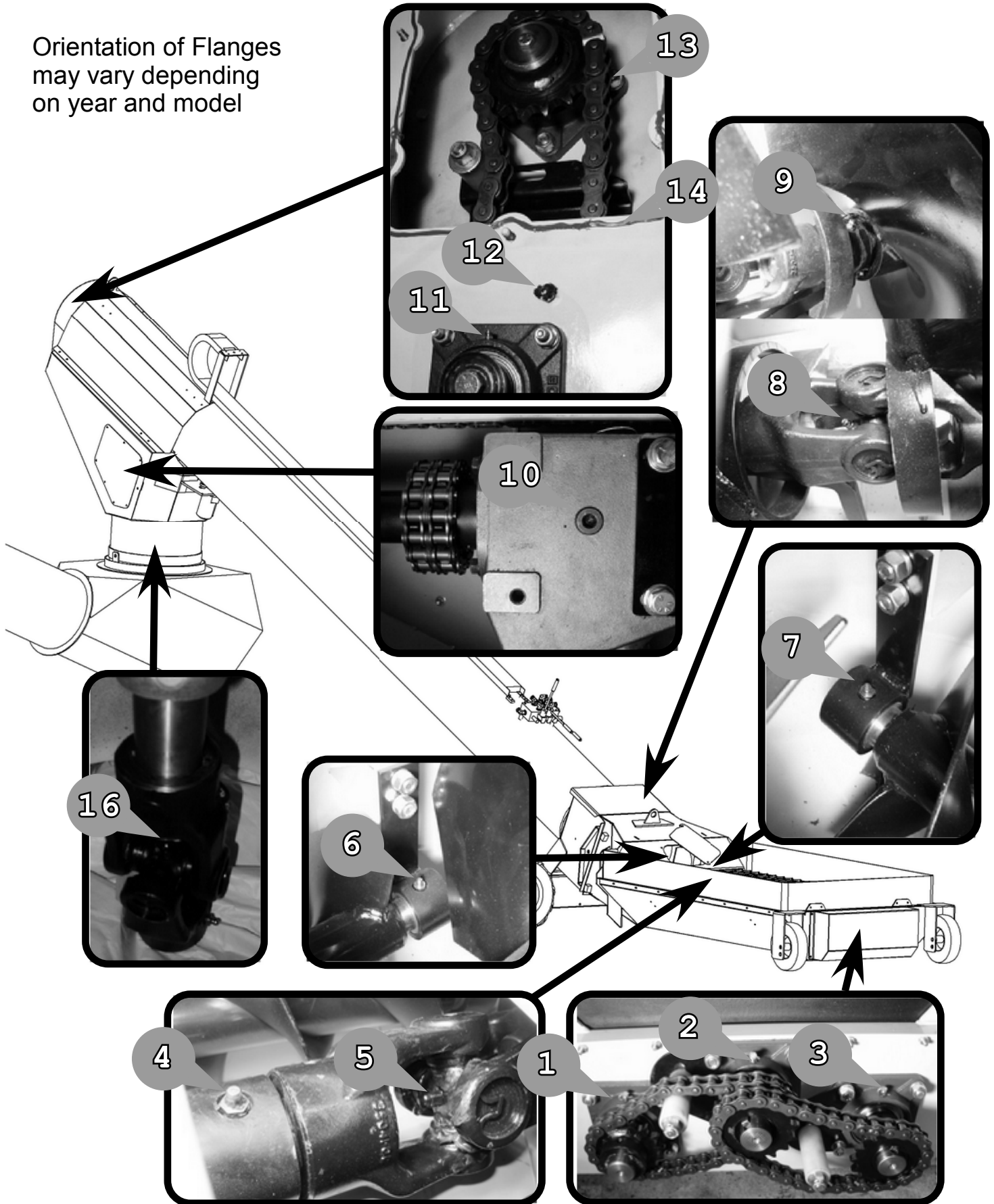
Greasing U-Joints 1 Pump High Temp
Gearbox Oil SAE 90

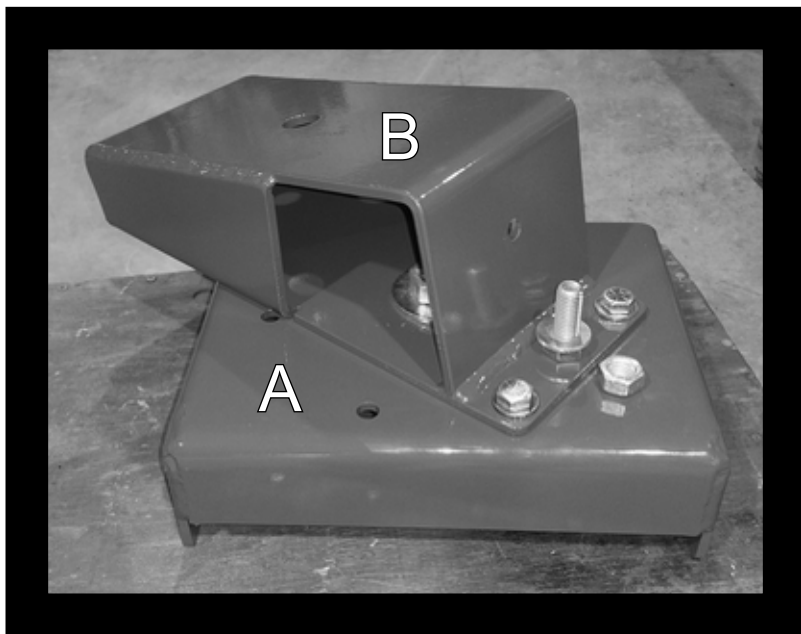
Contacts:

Rodono Industries Ltd.
RR#1
Clive, Alberta
T0C 0Y0
Phone 403-784-3864
Fax 403-784-2402

email: contact@rodono.ca
website: www.rodono.ca

Orientation of Flanges may vary depending on year and model

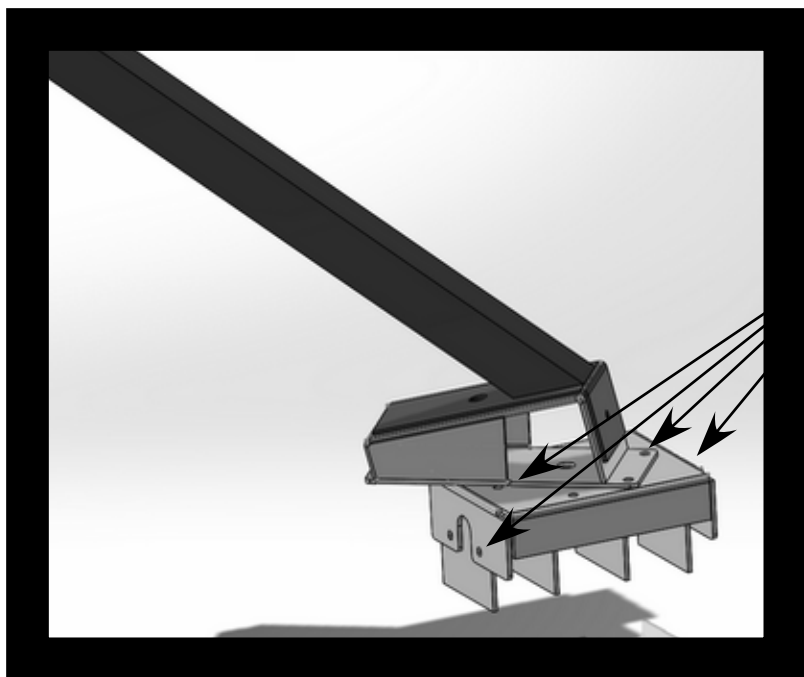




The winch mount to fit an Xtend on a Brandt HP for 2017 is meant to bolt on. It will require drilling 6 holes at 1/2" and enlarging the pin hole to 5/8"

This Bracket assembly inserts between the current winch arm and the current winch mount to swing the hook further back and tilt the arm down to allow use of the factory winch arm without cutting and welding like previous models.

It will still swivel from side to side on some lengths of Brandt Augers if there is enough clearance to the cable mount frame.



- 1: Remove Brandt Winch arm from its mount
- 2: Place lower piece of winch kit in place on Brandt winch mount. Use 1" bolt to hold the mount in place temporarily.

- 3: Drill through Brandt winch mount in 6 places with 1/2" drill bit.
2 on top
4 on side.

- 4: Remove the 1" Bolt. Place the top part of mount in place. Install and tighten 4 of 1/2" NC x 1 1/4" Bolts in sides
2 of 1/2" NC x 1 1/2" Bolts in top
and the 1"NC x 2" Bolt in the middle.

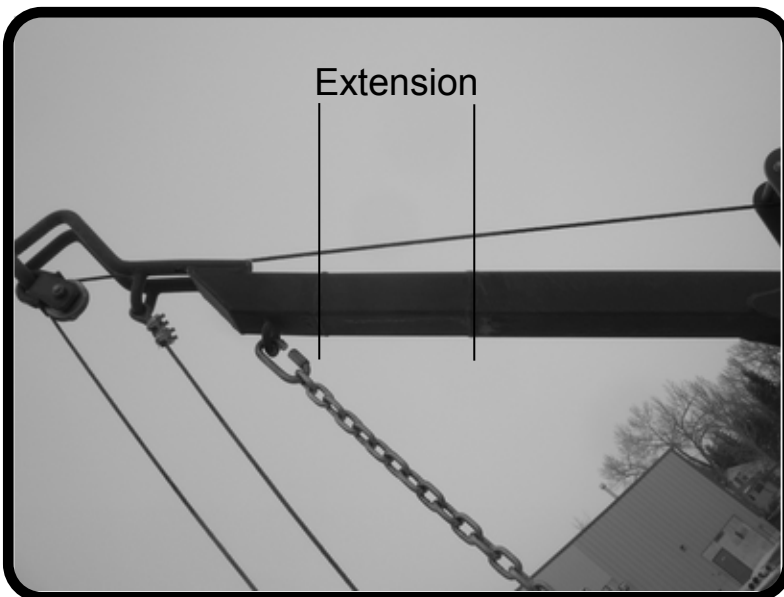
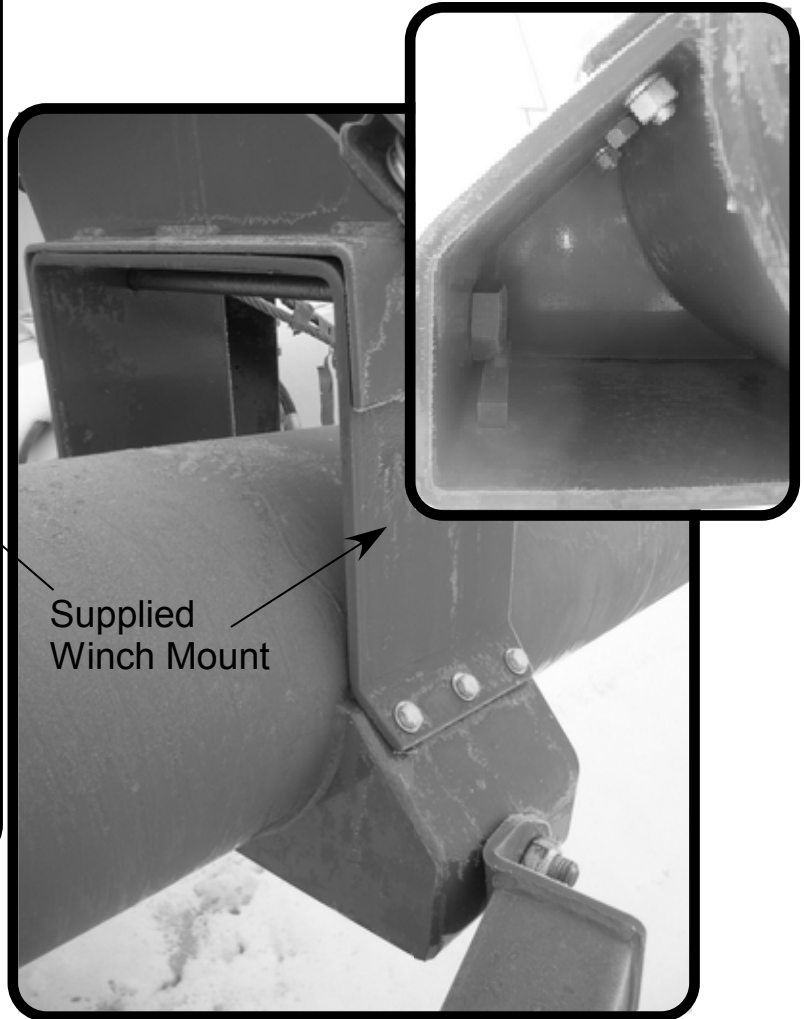
- 5: Bolt the Brandt winch arm back in place on top of the new mount.
Drill the small pin hole out to 5/8" and install the 5/8" bolt with the stover lock nut.

- 6: Test for safe operation and clearances.

Kit Includes

- A: Lower Mount
- B: Upper Mount
- 4- Gr 8- 1/2" NC x 1 1/4" Bolts
- 2- Gr 8- 1/2" NC x 1 1/2" Bolts
- 6- Gr 8- SAE Flat Washers
- 6- Gr 8- Lockwashers
- 6- Gr 8- 1/2" NC Nuts
- 1- Gr 8- 1" NC x 2" Bolt
- 1- Gr 8- 1" Lockwasher
- 1- 1" Flat Washer
- 1- Gr 8- 1"NC Nut
- 1- Gr 8- 5/8" NC x 1 1/2 Bolt
- 1- Gr 8- SAE Flat Washer
- 1- 5/8" NC Stover

Square tube is supplied to extend the Brandt winch arm if the swing hits the auger frame. This should only be required on 2017 Brandt Augers.



- 1: Set mount in place on main arm support
- 2: Mark holes
- 3: Drill Holes
- 4: Bolt in place
- 5: Move winch to new mount

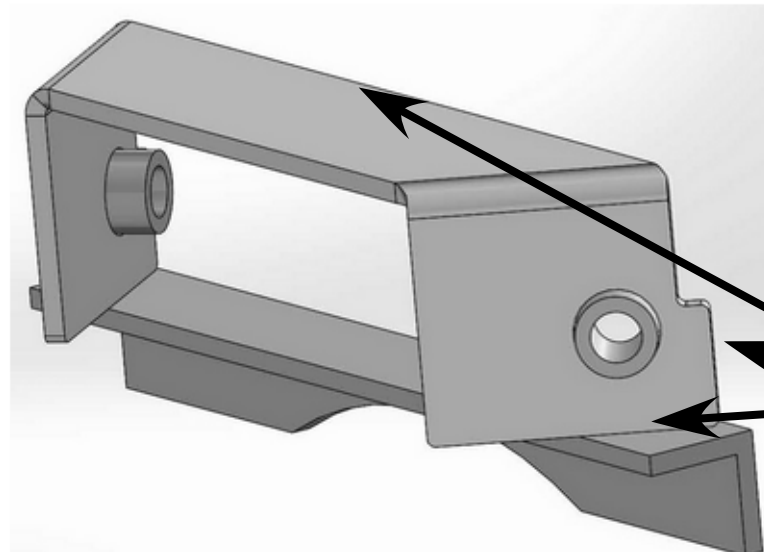
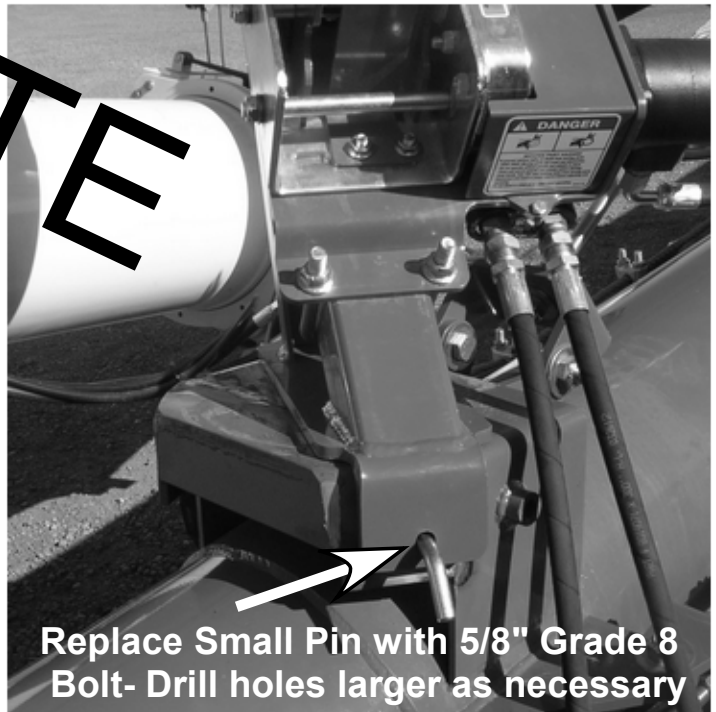
(Hoses on the Brandt optional hyd. winch are long enough for side shown if winch was to be mounted on the opposite side, the hoses would need to be extended.)

The tube on the winch arm may need to be extended (Cut and Welded) with the supplied tubing to keep the hopper from hitting the A Frame.

In 2012 Brandt changed to a swivelling winch
So the bracket supplied to change the winch is
different. Instead of changing the position
of the winch, we change the angle of the winch.

Steps

- 1: Grind paint off front and side edge of factory Brandt mount
- 2: Hold supplied bracket in place so that the pin line up when swivelled (as Shown)
- 3: Tack Weld in place
- 4: Check alignment of pin in both positions
- 5: If OK, Weld top and both sides
Place Angle Iron below and weld edges for additional strength.
- 6: Paint to match Auger
- 7: A piece of tube is supplied to extend the winch arm, this will put the swing far enough away from the auger that it will not hit during transport.
Cut the winch arm, insert and fully weld the new section into the arm.
- 8: Lastly, insert the supplied length of chain into the existing safety chain, using the supplied quick link. Tighten all links.



**Full WELD
along all edges**